

SKANDI·BO®



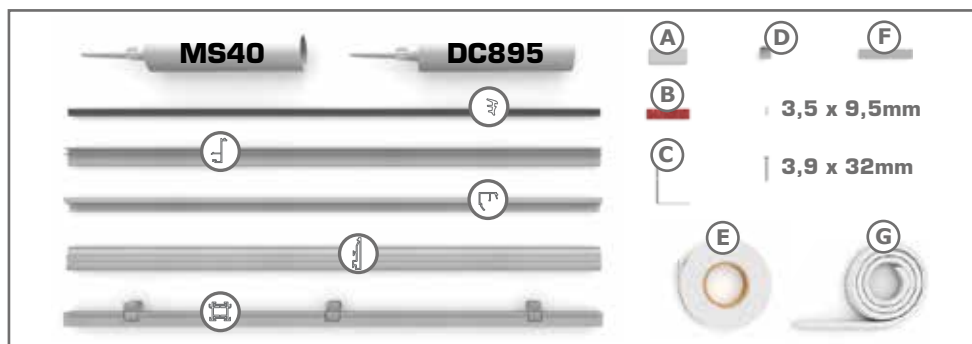
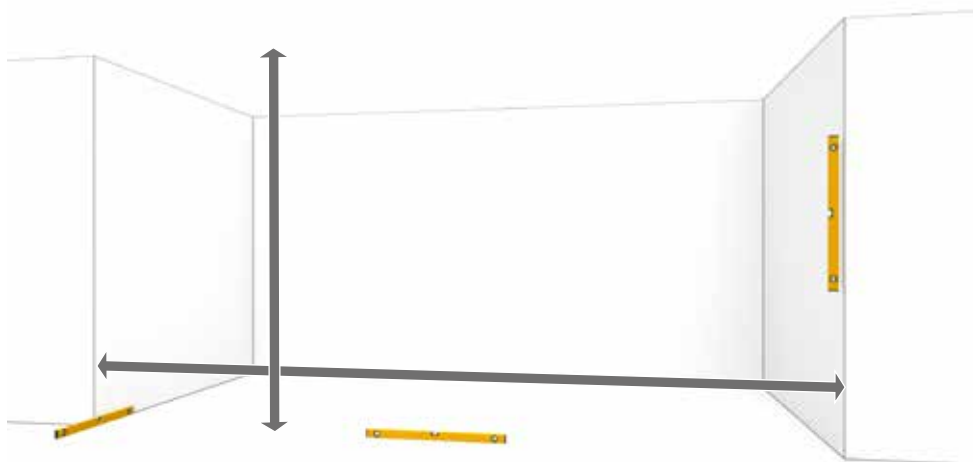
**OC50 FULLY GLAZED WALL
WITH FIRE RATING**

OCEAN

Installation guide for fully glazed fire-rated system

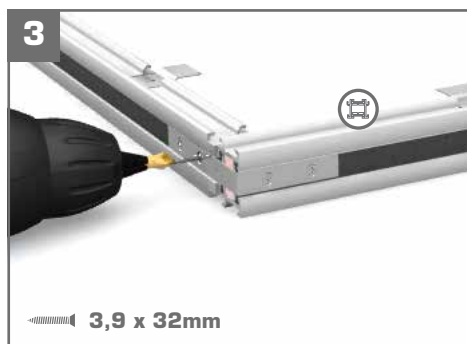
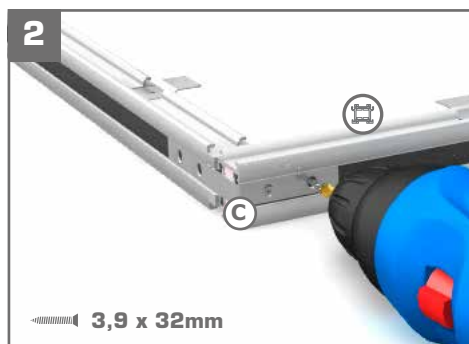
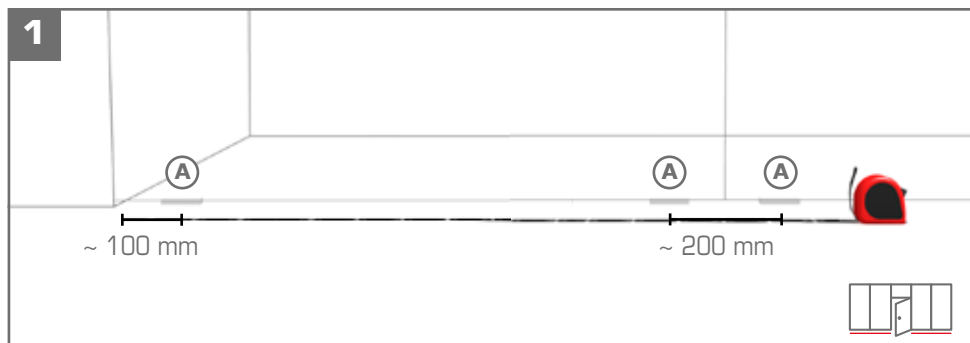
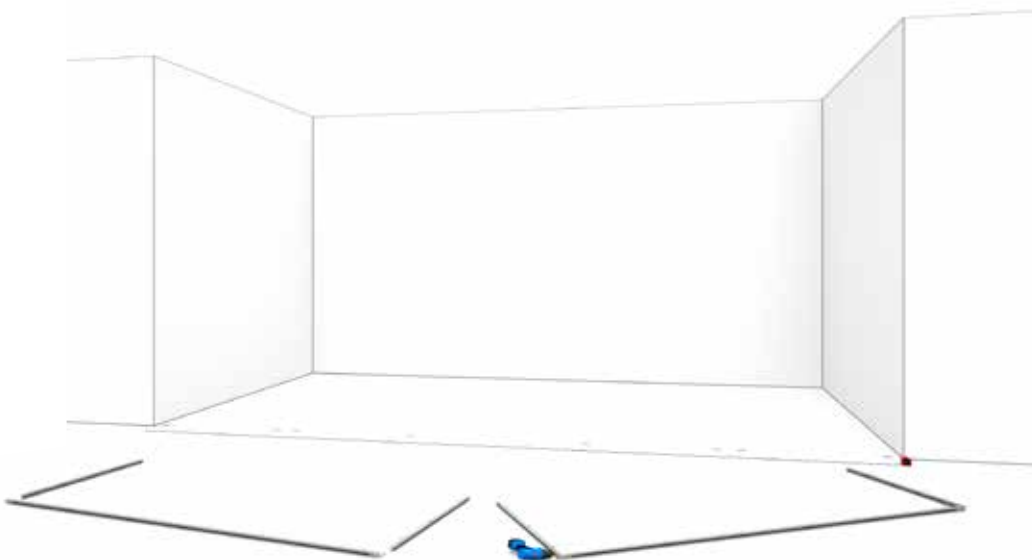
1

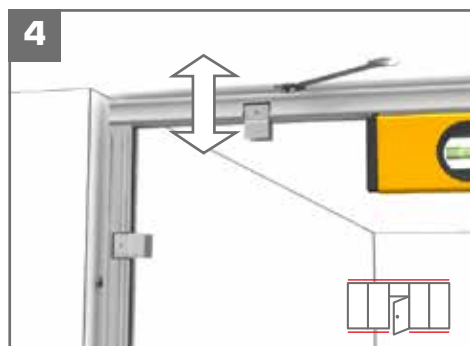
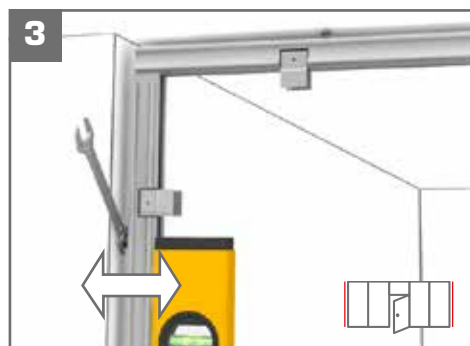
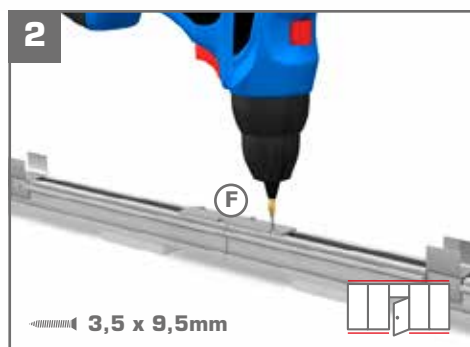
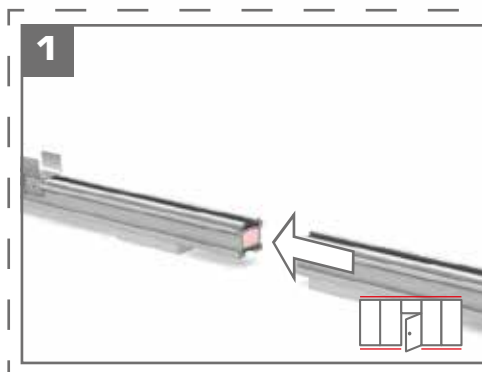
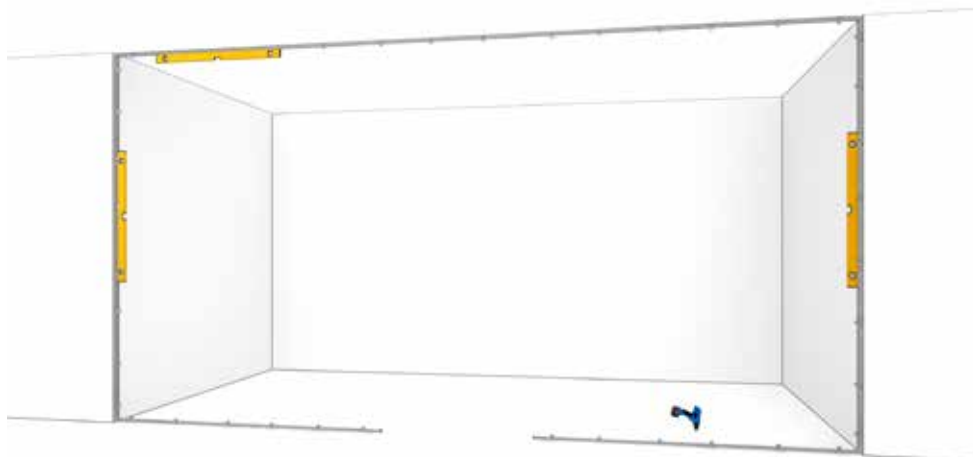
SKANDI·BO® 

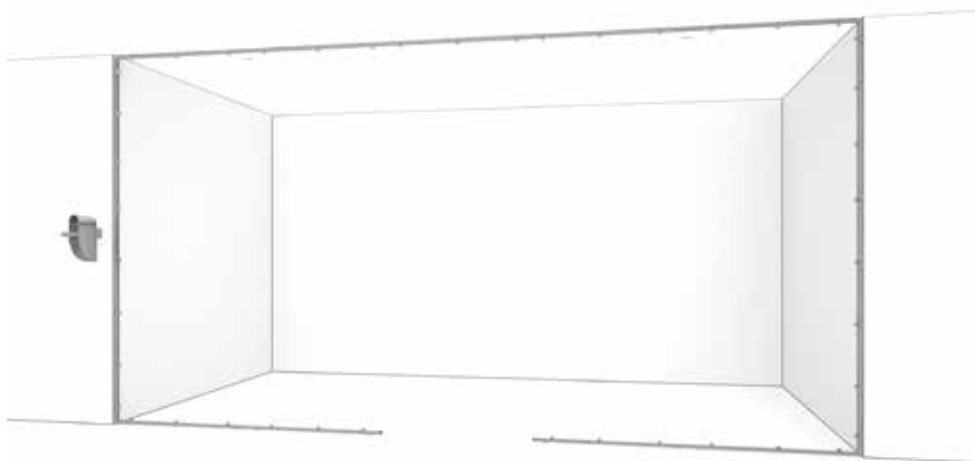


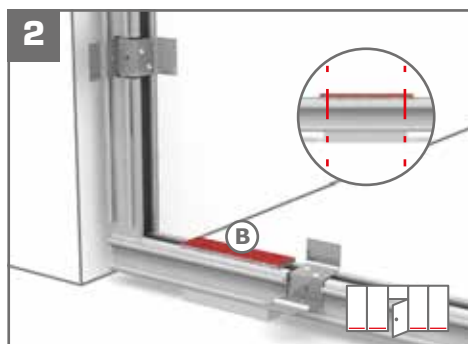
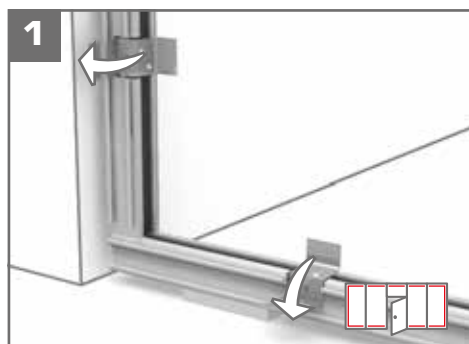
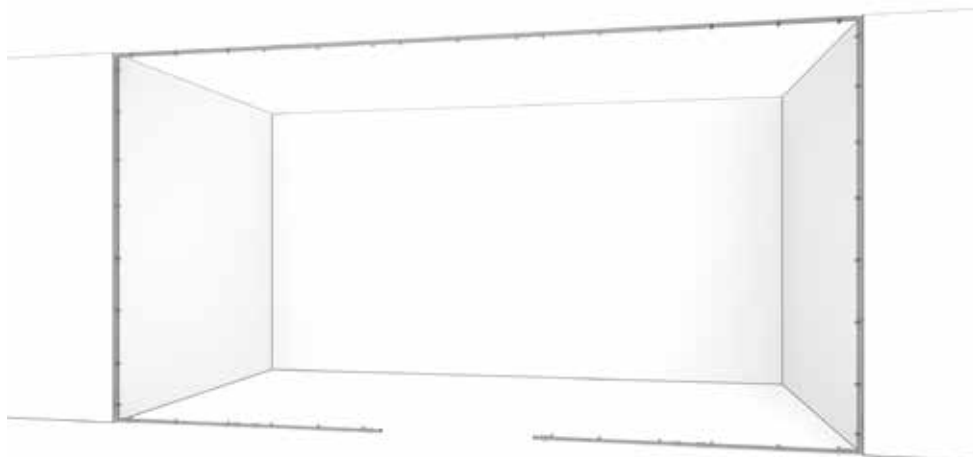
2

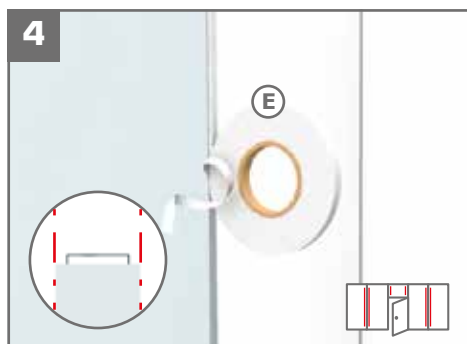
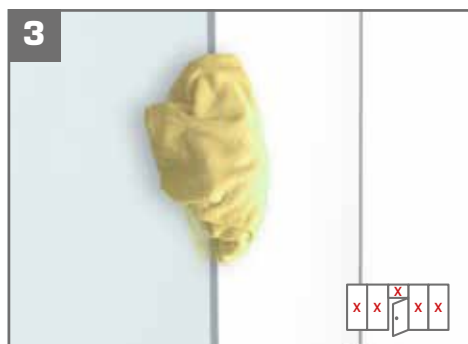
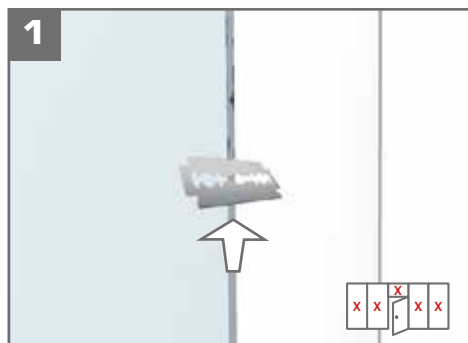
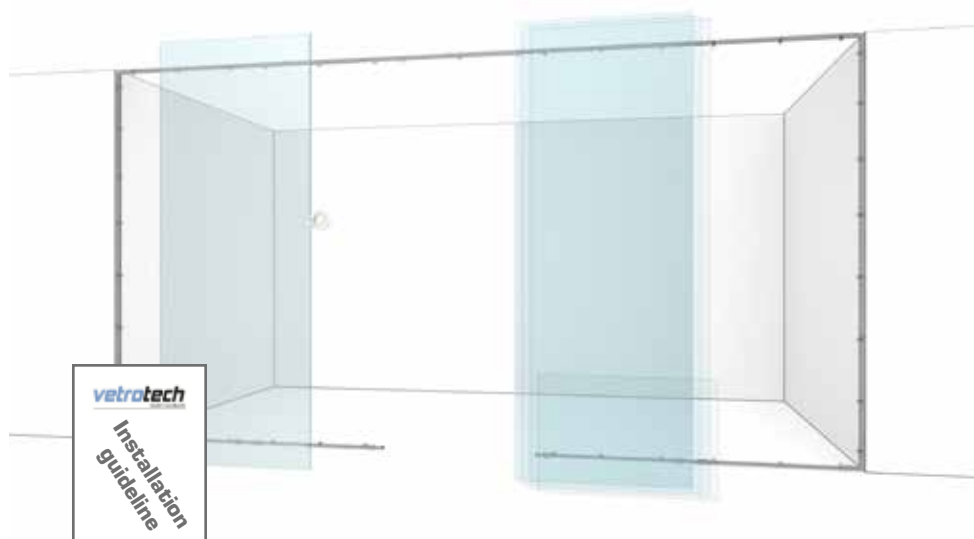
SKANDI·BO® 

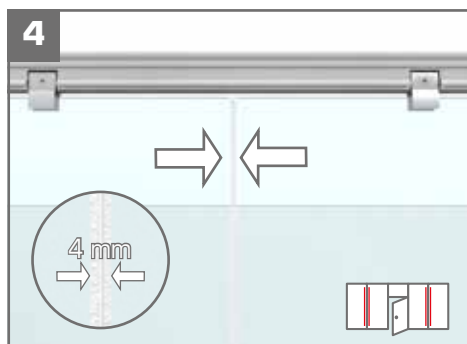
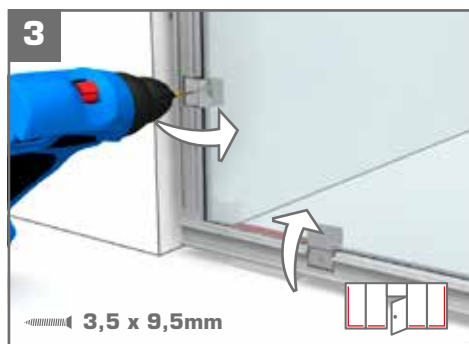
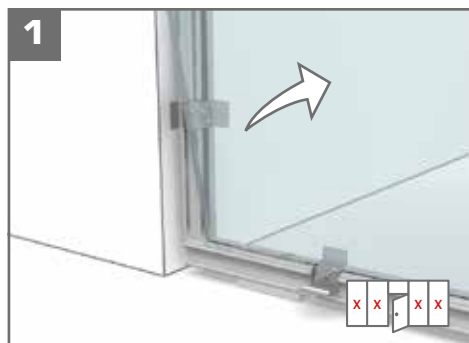








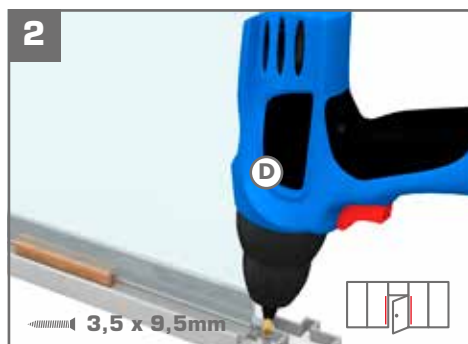
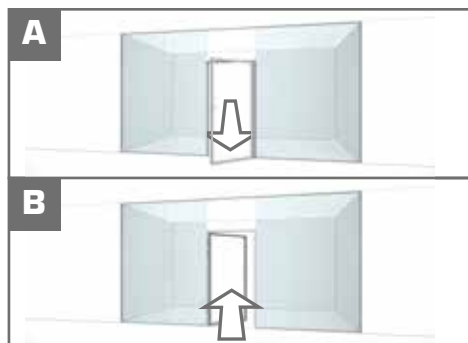


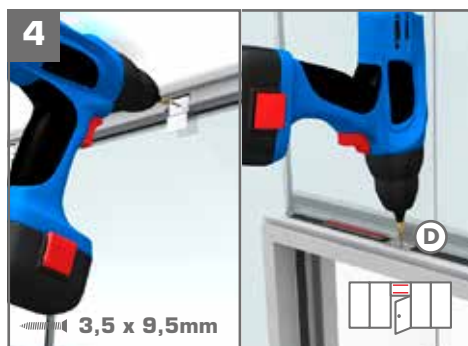
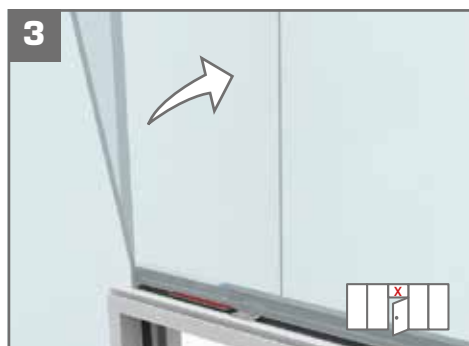
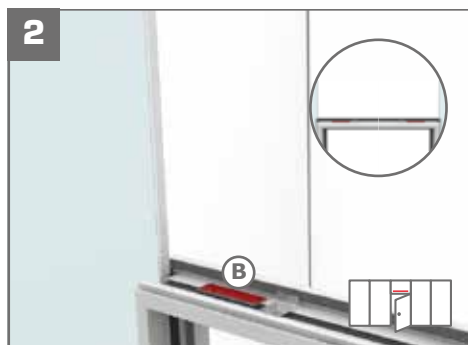
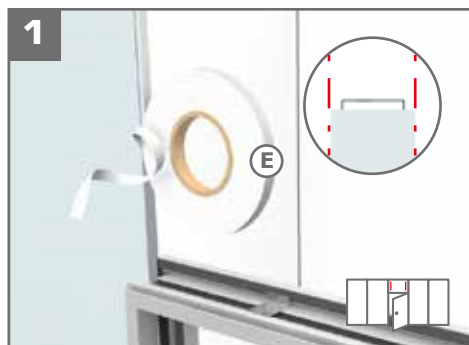


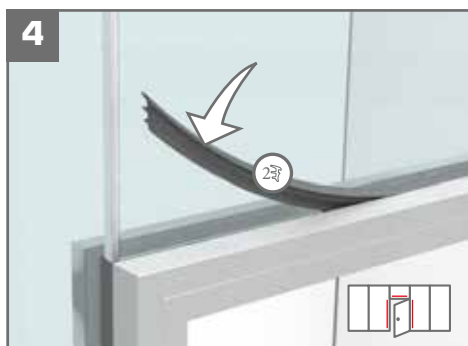
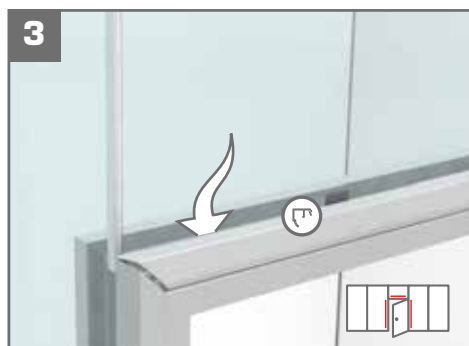
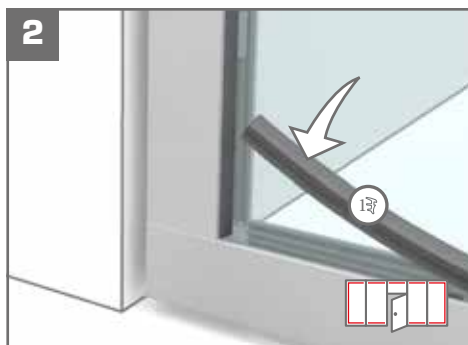
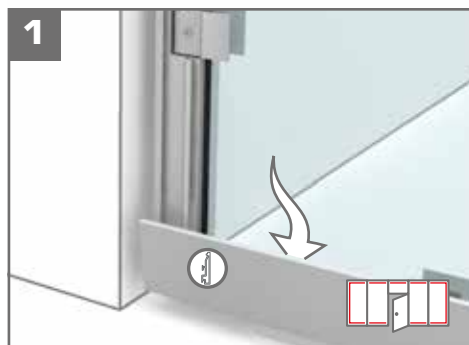
8

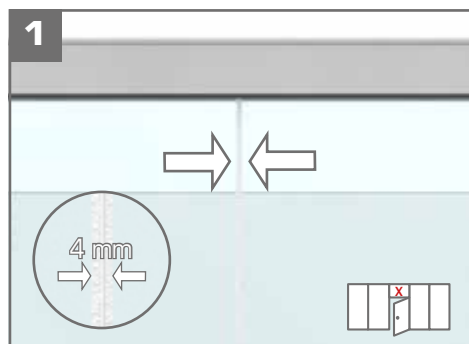


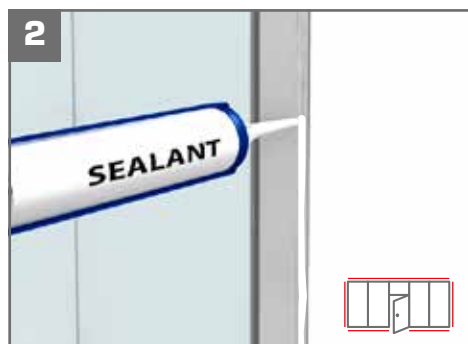
SKANDI·BO® 







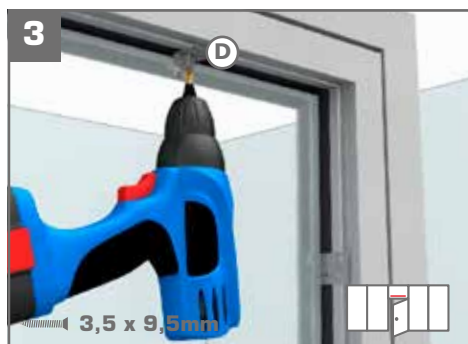
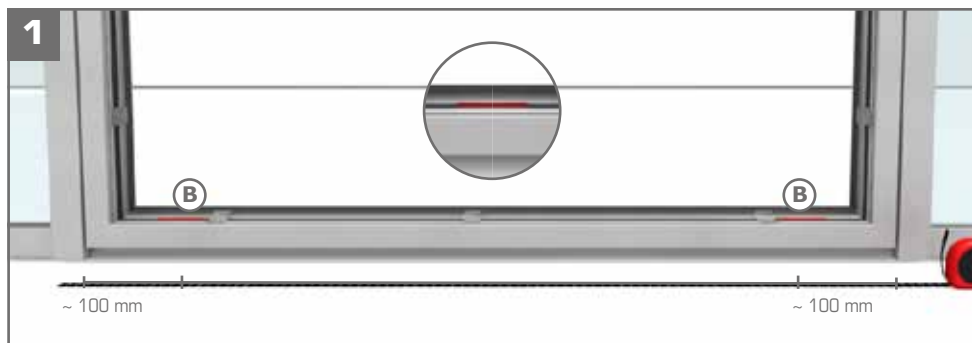


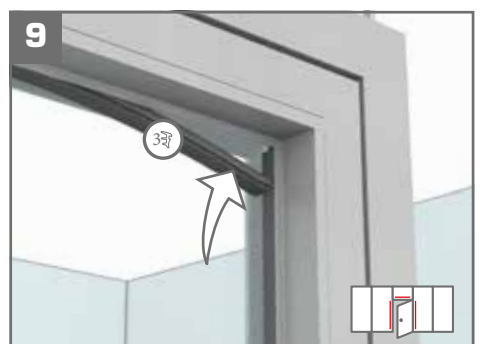
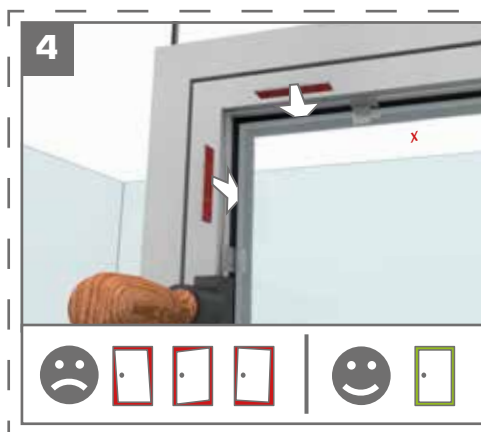


13



SKANDI·BO® 





SKANDI·BO®



SKANDI-BO A/S
www.skandi-bo.dk
info@skandi-bo.dk
+45 59595054

INSTALLATION GUIDELINES and Special Instructions

for CONTRAFLAM STRUCTURE

PRODUCT AND INSTALLATION COMPLIANCE

This installation guideline will assist the installer to set up CONTRAFLAM STRUCTURE glazing elements for the fire-resistant classifications EW 20 through EI 120 and provides **important instructions** to be **strictly followed** for a reliable performance in case of fire as well as an aesthetically pleasing appearance.

The application must always be in accordance with **approvals** or other **certifications**. This must be verified by the contractor prior to ordering CONTRAFLAM STRUCTURE.

The installer must check the application conditions in the property and local environmental conditions **in advance**. For this purpose, the current "CONTRAFLAM STRUCTURE **Application Guideline**" must be taken into account for the appropriate use and application of the product. In addition, the instructions for cleaning, preparing and installing CONTRAFLAM Structure from this guideline must be followed in full.

SEALING AND OTHER MATERIALS

Depending on whether CONTRAFLAM STRUCTURE is for an **interior** or **exterior** application, installation details can differ, which includes the joint width between two glass panels of CONTRAFLAM STRUCTURE, intumescent strips materials, cleaning agents, etc.

Especially in exterior applications when the glass is regularly exposed to the elements, this installation guideline, the applicable general technical guidelines for exterior glazing as well as the available current instructions of the sealant manufacturer, must be strictly followed to **ensure proper joint function** under normal conditions of use. According to the sealant manufacturer DOW, the approved silicone type DOWSIL 895 meets the provisions of ETAG 002.

An ETA (European Technical Approval) is also available for this material. The recommendations for processing and application given **by the silicone manufacturer** are to be fully taken into account by the installer. The two-cloth method described by DOW is highly recommended for glass cleaning.

It is expressly advised that only the listed types of silicone, which have been positively tested in combination with the glazing and other components, are **approved** for application with CONTRAFLAM STRUCTURE. When using other silicones, solvents, intumescent and other materials, disregarding the generally recognized rules of technology, as well as failure to follow these instructions, proper functions can no longer be ensured and any warranty is voided.

NOTE

The assembly details given here are general guidelines. The exact determination of the materials to be used and assembly details may differ and can be found in the corresponding approvals or other certifications.

HANDLING AND SAFETY

As CONTRAFLAM STRUCTURE glass panels are often times for floor-to-ceiling applications, each glass panel is of considerable weight. Its handling and installation shall be conducted with the **appropriate tools and lifting devices**, such as suction cups and hoist systems, in order to avoid any glass damage or harm to the installers. The handling and installation of CONTRAFLAM STRUCTURE shall only be performed by **specifically trained staff**.

For further questions, please contact your local Vetrotech Saint-Gobain office.

Confirmation of compliance with the installation guidelines and special instructions

Construction project / Development: _____

Quote / Order number: _____

Date: _____

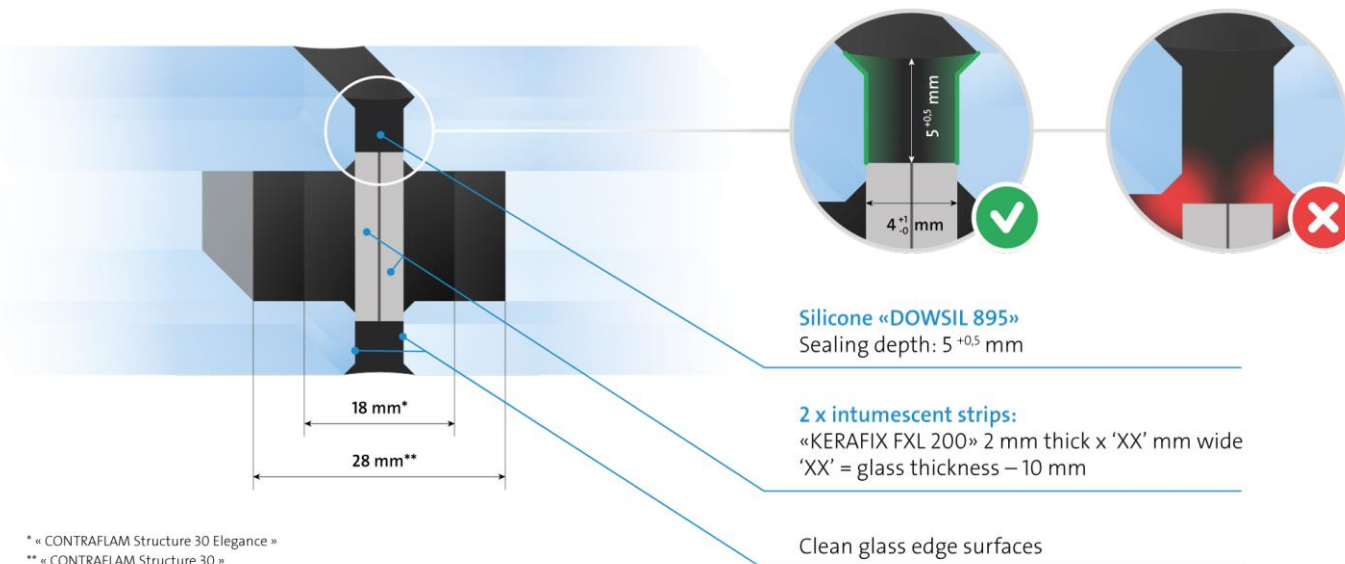
Signature / Company stamp: _____

CONTRAFLAM STRUCTURE can only be delivered upon return of this acknowledgment signed by the installer.

CONTRAFLAM STRUCTURE 30

CONTRAFLAM STRUCTURE 30 Elegance

For interior use



INSTALLATION INSTRUCTIONS

1. Clean glass edge surfaces:

- Cut off any excess seal with a blade.
- Remove all sealing residues with steel wool type «00».
- Clean glass edges with white spirit or «DOWSIL™ R41 Cleaner Plus» only.
ATTENTION: do not use other cleaners or solvents!

2. Apply intumescent tape:

- Glue self-adhesive «Kerafix FXL 200» to the entire height of each of the two vertical glass edges facing each other.
- Pay special attention to centric positioning.
- Tape must **completely cover** the glass seals.

3. Glass assembly:

- Install glass panels and align them with each other using suitable setting blocks. **Tolerances** according to sketch above or certification.
- Glasses can be aligned parallel to each other with light, continuous pressure in the direction of the glass surfaces.

4. Caulking:

- Fill joint with silicone «DOWSIL 895». **Tolerances** according to sketch above or certification.
- Remove excess material and tool surface in usual way.

As an alternative to the preferred cleaning agent DOW R41, we propose to use a white spirit Type 3 with an aromatic content below 2% - hydrotreated heavy naphtha (petroleum)

RISK MANAGEMENT OPTIONS ANALYSIS

CONCLUSION DOCUMENT

for

White spirits

Substance name:	EC number	CAS number:
White spirit type 0	265-191-7	64742-88-7
White spirit type 1	265-185-4	64742-82-1
Stoddard solvent	232-489-3	8052-41-3
White spirit type 3	265-150-3	64742-48-9

Member State: Denmark

Dated: August 2014, Final version

Kind regards • Freundliche Grüsse • Cordialement



Stay **ON THE SAFE SIDE** with our solutions: contact us today!



Simon Laybourn Christensen

Testing and Certification manager, Nordic & Baltic

VETROTECH SAINT-GOBAIN

Robert Jacobsens vej 62 A • DK-2300 Copenhagen • Denmark

Tel: +45 88 83 29 12 • Mobile: +45 26 87 52 95

E-mail: Simon.Christensen@saint-gobain.com

www.vetrotech.com

