



Let the light in
– and keep the fire out

GLASS WALLS AND DOORS

SKANDI·BO® 

CONTENTS

P. 3	Our product range
P. 5	Simplicity
P. 11	Strength
P. 17	Hygiene
P. 21	Doors and accessories
P. 27	Custom designs
P. 31	SKANDI-BO supports you at every step
P. 35	Tested fireproof
P. 39	Technical specifications

SKANDI-BO

Strong glass walls and creative solutions

At SKANDI-BO, we design glass walls that combine stylish aesthetics with an uncompromising approach to functionality. We are professional advisers, and we understand how to transform the architect's and the developer's ideas into simple, strong components. Our solutions are manufactured at our own factory in Denmark by experts who are fully familiar with the properties of the materials we use, and who know how to combine structural requirements with innovative design.

SKANDI-BO has a history of designing stylish solutions, focusing on light and air. The clean lines of our aluminium systems are echoed in all of our solutions. This also applies to our fire- and sound-proofed walls, which offer unique potential for combining maximum inflow of light with a high degree of comfort and safety. For example, we have glass partition walls and doors that comply with the superior EI60 (BS60) fire rating.

Our solutions are not standard but are versatile, based on your own specifications. And we are renowned for managing projects through every phase, right up to delivery at building site.



OUR PRODUCT RANGE

Three systems, numerous ranges

SKANDI-BO has Denmark's broadest range of indoor glass walls and doors to match. To make it as easy as possible to select the right solution, we have divided our product range into three systems. Once you have found the system you want, you simply need to decide whether it should be fireproof or not. All products are available with and without fire rating and the design is so similar that it is difficult to see the difference.



Fully glazed section with ID50 Fire-rated and ID31 Non-rated.

SIMPLICITY

The look is simple and stylish. It is actually so simple that, from a distance, it does not even look like a wall. The glass is fixed to discrete profiles both top and bottom, otherwise there are no frames. The solution is perfect if you are looking for maximum transparency and daylight through the building.



Frame system with ID85 Fire-rated and ID85 Non-rated.

STRENGTH

If you have high ceilings, you will need strength if you want to use glass. With our profiles, you can achieve the light and airy look of the glass wall even if the system spans several storeys. This strong frame system is our most versatile system and is also suitable for ceilings of standard height, for built-in Venetian blinds and many other options.

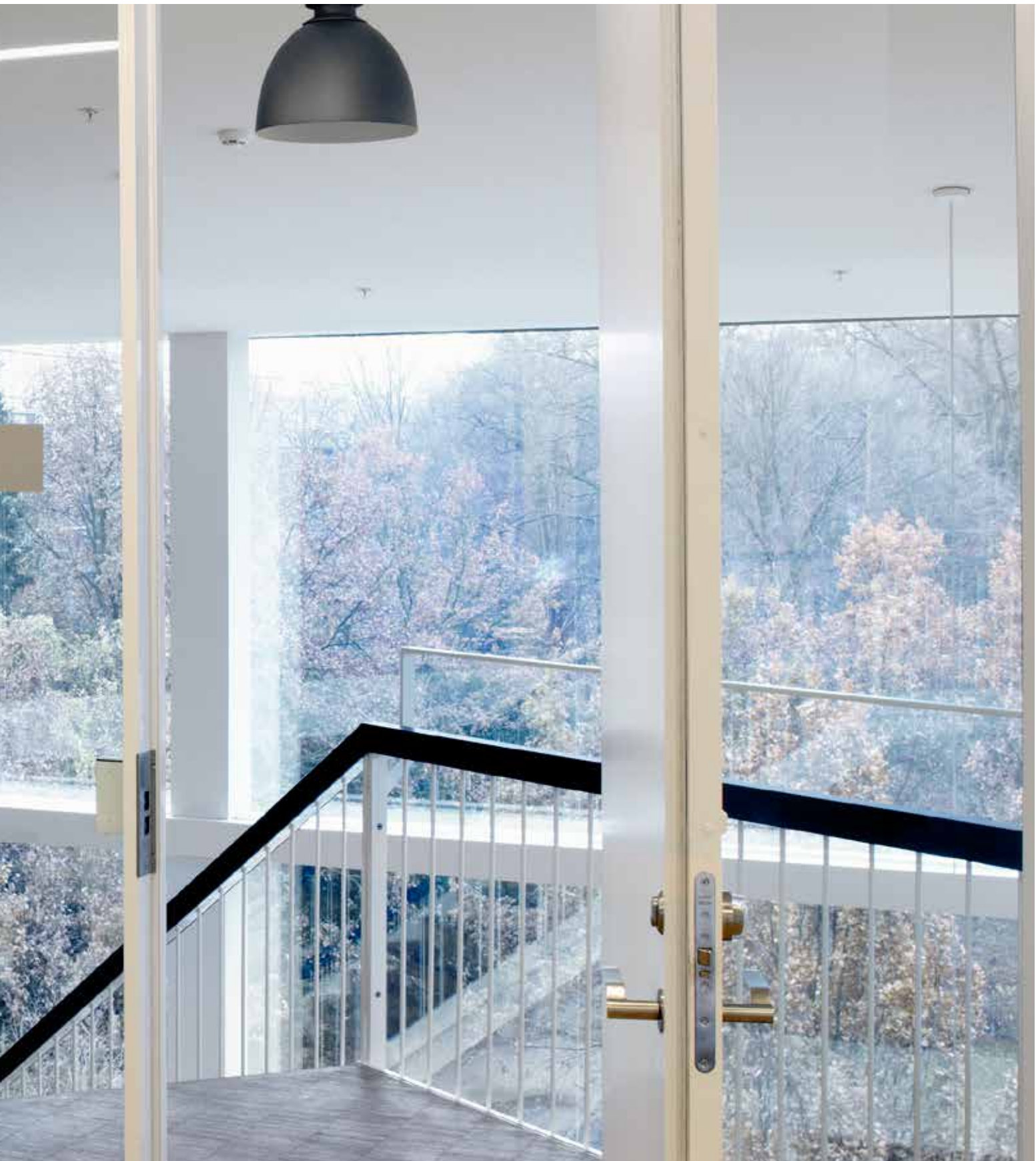


Laboratory wall with ID120 Lab Fire-rated and ID120 Lab Non-rated.

HYGIENE

We have glass walls and doors for rooms where cleanliness is not merely a virtue but a necessity, such as laboratories, hospital wards and production environments with strict hygiene requirements. From the side, the wall looks like one large glass surface because the profiles are situated behind the glass and joined with an airtight seal. There is nowhere for the dirt to get through, and it is easy to clean.





SIMPLICITY

The look is simple and stylish. It is actually so simple that, from a distance, it does not even look like a wall. The glass is fixed to discrete profiles both top and bottom, otherwise there are no frames. The solution is perfect if you are looking for maximum transparency and daylight through the building.

FULLY GLAZED WALL WITH FIRE RATING
FULLY GLAZED WALL WITHOUT FIRE RATING

FULLY GLAZED WALL WITH FIRE RATING

ID50

The SKANDI-B0 fully glazed system has two product ranges: ID50 (which is comprised of ID50 Fire-rated and ID50 Non-rated) and ID31 Non-rated. Our fully glazed solutions are held in place top and bottom by a simple aluminium profile and are joined by a discrete line of grout. The walls in the ID50 line are 46 to 56 mm thick and ID31 walls are 31 mm thick, but both have the same light and airy architectural style.



Laboratory building at Roskilde University



ID50 Fire-rated

ID50 is our exclusive glass partition wall system, combining a stylish look with fire safety.

The joint between the glass sections is a custom-developed, fireproof seal. And although the look is delicate, this solution is just as fireproof as ID85 Fire-rated with profiles. SKANDI-B0 was also the first in Denmark to obtain certification of a fireproof joint in corner sections. The joint provides excellent scope for creating fireproof solutions with unique, visual qualities. ID50's discrete, fireproof joints give the wall an even look along its entire length. The simplicity of the fully glazed wall is broken by the fire-rated black joint, which in combination with the black profile top and bottom creates a coordinated look.

In spite of its simple design, ID50 provides both fire protection and soundproofing.



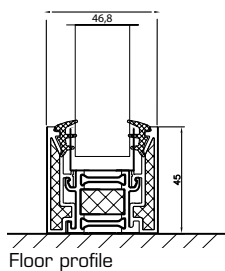
ID50 can be manufactured in a variety of glass types to meet even the strictest fire safety requirements.

EW30

EW60

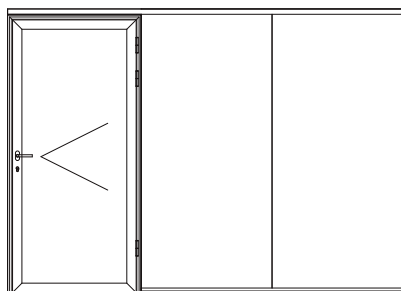
EI30

EI60

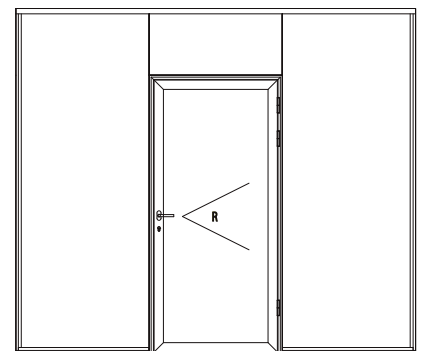


ID50 with fireproof joint, Bestseller, Brande

The figures show examples of some of the many options for combining our versatile glass partition walls.



ID50 wall with glass-framed door and joints



ID50 wall with glass-framed door and section above the door

FULLY GLAZED WALL WITHOUT FIRE RATING

ID31

Our ID31 range is a simple, light solution for areas where you want maximum inflow of light and where there are no fire safety requirements. The aluminium profiles top and bottom give the glass wall an exceedingly subtle and stylish appearance. To achieve a discrete look, you can choose profiles in a colour that matches floor and ceiling, or you can accentuate the profiles by choosing a contrasting colour.



Copenhagen Business School, Frederiksberg



Fully glazed section combined with a wooden door

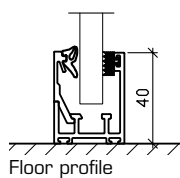
ID31 Non-rated

The ID31 glass partition wall meets all requirements for dividing walls in ordinary office environments, and is highly suitable for partitioning rooms and screening off spaces such as corridors and reception areas.

If you have strict acoustic requirements, you can choose sound-absorbent glass or a more soundproof solution with double glazing. This makes the system particularly suitable for use in offices in production environments where it is important to keep the noise out, or in rooms where there is a need for full discretion.

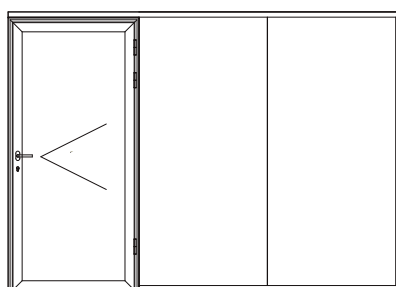
You can create exciting effects by decorating the glass with your own designs, using either foil or more durable silk screen print. The aluminium profiles top and bottom are available with natural anodisation and in all RAL and special colours.

ID31 is the light and simple solution for optimal inflow of light.

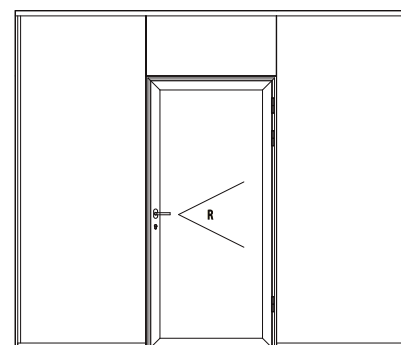


DTU 220 Biosustain, Lyngby

The figures show examples of some of the many options for combining our versatile glass partition walls.



ID31 wall with glass-framed door and joints



ID31 wall with glass-framed door and section above the door





STRENGTH

If you have high ceilings, you will need strength if you want to use glass. With our profiles, you can achieve the light and airy look of the glass wall even if the system spans several storeys. This strong frame system is our most versatile system and is also suitable for ceilings of standard height, for built-in Venetian blinds and many other options.

FRAME SYSTEM WITH FIRE RATING
FRAME SYSTEM WITHOUT FIRE RATING

FRAME SYSTEM WITH FIRE RATING

ID85

Our strong ID85 system is actually two product lines with one design. The dimensions and design of ID85 Fire-rated are the same as for the ID85 Non-rated. Resistance to fire is ensured by selecting the right profiles and specifying the right fireproof glass. With ID85, there is no need to compromise on architectural style.



Centre for Society and Health, University of Copenhagen



ID85 Fire-rated

This product line combines fireproof glass with custom designed profiles. The specially fire retardant design and choice of materials guarantee effective fire protection.

ID85 Fire-rated consists of an aluminium frame of fire retardant material and laminated fireproof glass, available with fire ratings from E30 to EI60.

ID85 is our most versatile system. Despite its excellent fireproofing properties, due to its simple structure and slim design, ID85 Fire-rated has the same subtle appearance as the ID85 Non-rated. You could also add double glazing to the system and Venetian blinds between the two layers of glass.

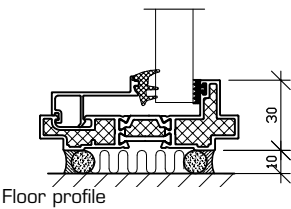
If you are looking for the highest fire safety standard, and do not wish to compromise on aesthetics, we recommend ID85 Fire-rated with frame and glass-framed door – fire tested and certified as an entire unit.

ID85 Fire-rated ensures both fire-proofing and soundproofing – yet the look is both simple and light.



ID85 can be manufactured with different types of glass and achieve the following fire ratings:

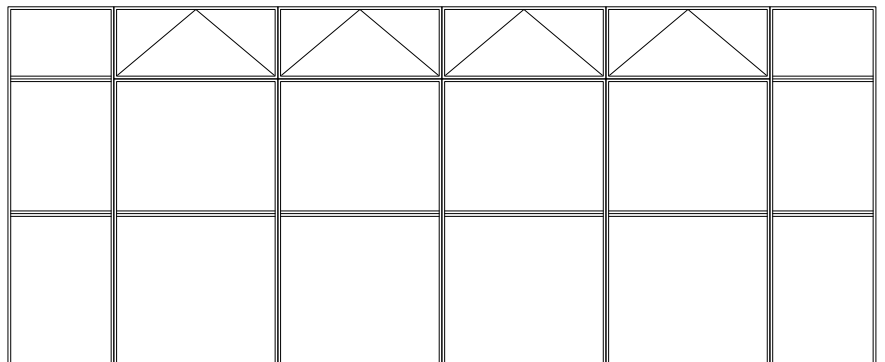
E30	E60
EW30	EW60
EI30	EI60



The figures show some of the many options for combining our versatile glass partition walls.



Sydhavnsskolen, South Harbour, Copenhagen



ID85 Fire-rated with hinged, motorised frames

FRAME SYSTEM WITHOUT FIRE RATING

ID85

ID85 is designed to meet architects' requirements for a minimalist look where a fully glazed solution is not possible. For example, the glass may need to span several storeys, or there may be a conscious desire for a look that emanates more strength and character. Frames are available in a wealth of colours to strike exactly the right tone.



Hall C, Arsenaløen, Copenhagen



ID85 Non-rated

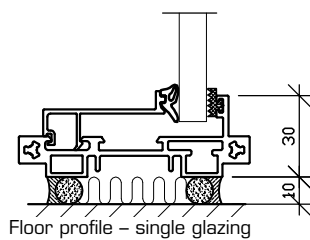
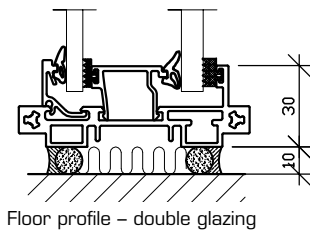
The ID85 frame system has a narrow aluminium profile with level differences that accentuate the lightness, regardless of whether the glass is single- or double-glazed.

The ID85 Non-rated system consists of a standard aluminium frame with ordinary safety glass.

An ID85 system is more soundproof than a fully glazed wall. Double glazing provides the best sound reduction and is therefore ideal for offices or meeting rooms where the glass walls face the rest of the company. At the same time, full discretion is ensured.

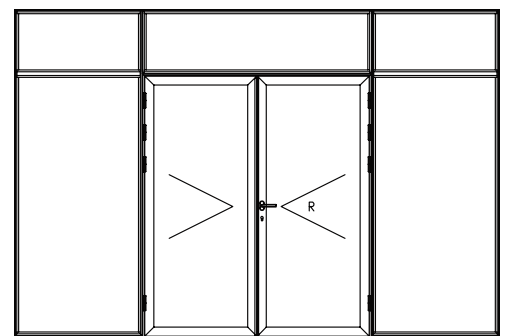
Since there is no difference in the exterior design and geometry of the profiles, the ID85 ranges can be used to construct a double-glazed solution, combining a fire barrier with a standard glass partition wall. You can also choose to install Venetian blinds between the two layers of glass.

With double glazing, Venetian blinds can be installed between the two panes of glass so that the room can be either open or closed to provide privacy.



Kanalstræde, Holbæk

The figures show some of the many options for combining our versatile glass partition walls.



ID85 section with double glass-framed door in a frame system





HYGIENE

We have glass walls and doors for rooms where cleanliness is not merely a virtue but a necessity, such as laboratories, hospital wards and production environments with strict hygiene requirements. From the side, the wall looks like one large glass surface because the profiles are situated behind the glass and joined with an airtight seal. There is nowhere for the dirt to get through, and it is easy to clean.

LABORATORY WALL WITH AND WITHOUT FIRE RATING

LABORATORY WALL

ID120 Lab

Our ID120 Lab systems, both the fire-rated and the non-rated versions, are our hygiene range. When old hospitals are renovated and new ones built, the aim is always to optimise daylight and transparency within the building. This promotes the well-being and comfort of patients and staff. ID120 enables this while, at the same time, meeting hygiene requirements.



Laboratory wall, Herlev Hospital



ID120 Lab Fire-rated & Non-rated

ID120 Lab Fire-rated meets the strictest fire safety requirements. The system complies with the EI60 fire resistance class.

ID120 is a double-glazed system with the glass mounted on the outside of the profiles on both sides. From the side, the glass wall looks like one solid glass surface, with discrete joints between the panes.

The 120 mm depth allows the ID120 Lab glass partition walls to fit flush with ordinary 120 mm thick walls, so that the glass becomes an integral part of the wall.

ID120 can be installed wherever an easy-to-clean design is required, for instance in areas where sensitive electronics are manufactured or food produced.

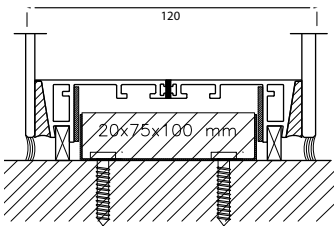
ID120 also meets our goal to ensure consistent design, regardless of fire safety or soundproofing requirements.

ID120 ensures a sterile and dust-free environment when hygiene requirements are strict.



ID120 can be manufactured with different types of glass and achieve the following fire ratings:

E30	E60
EW30	EW60
EI30	EI60

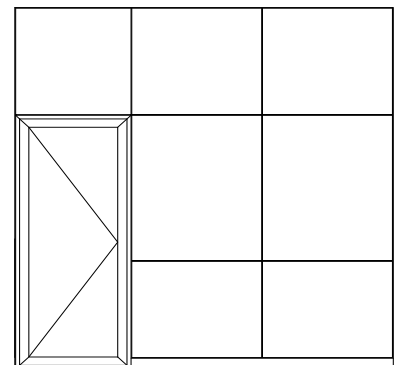


Floor profile – double glazing



Laboratory wall, Herlev Hospital

The figures show some of the many options for combining our versatile glass partition walls.



ID120 Lab with glazing bars and glass-framed door





DOORS AND ACCESSORIES

Our doors are custom designed for each project – sliding doors, folding doors, glass-framed doors, standard, fully glazed doors or wooden doors, either painted or with a hard-wearing, laminate surface. Our standard product line does not include accessories because we select the accessories to match each individual project. Here are a few examples to provide you with inspiration.

DOORS

You can choose from a wide range of doors and accessories for our three glass wall systems. SKANDI-BO's glass-framed door and glass-framed sliding door are unique. Both comply with the EI60 fire rating and are perfectly suited to our ID85 Fire-rated frame system. And our glass-framed doors have the narrowest casing and frame profiles on the market.

Glass-framed doors

- Narrow profile
- Fire rating up to EI60
- Soundproof
- Made to measure
- Optional noise barrier threshold



E30

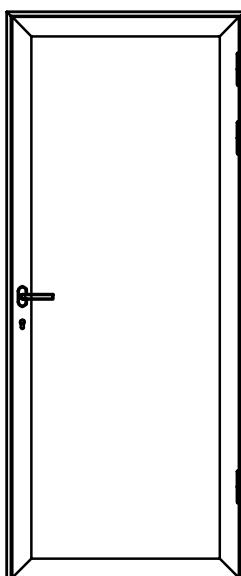
E60

EW30

EW60

EI30

EI60



Glass-framed sliding doors

- Narrow profile
- Fire rating up to EI60
- Soundproof
- Made to measure
- Optional noise barrier threshold



E30

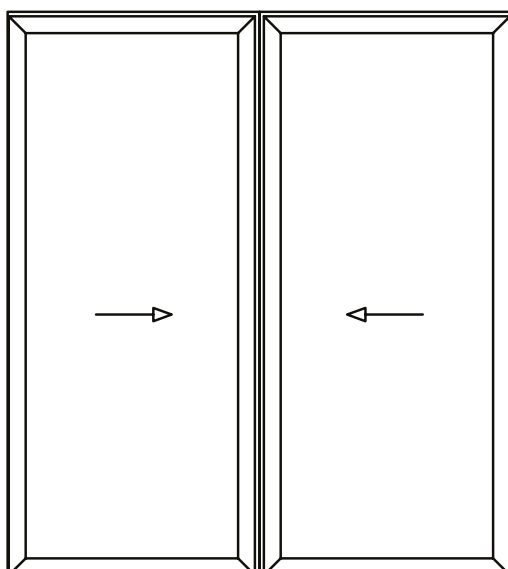
E60

EW30

EW60

EI30

EI60



SKANDI-BO's doors are not manufactured on an assembly line but are made to measure. Our doors are specifically designed to match your project's technical and aesthetic requirements.

Wooden doors

- Soundproof
- Fire rating up to EI60
- Variety of wood types and colours
- Delivered with aluminium frame
- Optional noise barrier threshold



E30

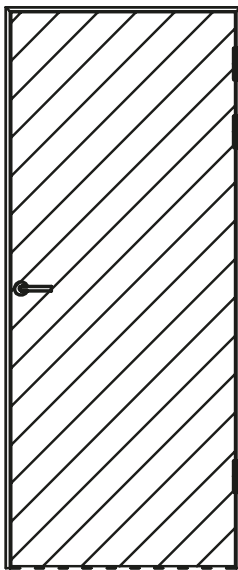
E60

EW30

EW60

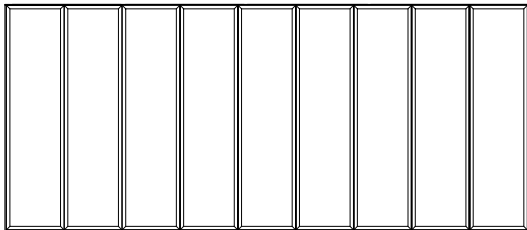
EI30

EI60



Glass-framed folding doors

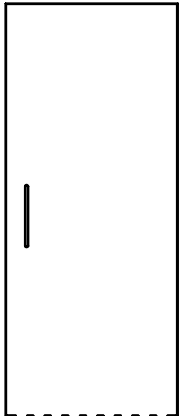
- Simple solution
- Minimalistic design
- Made to measure
- Optional noise barrier threshold
- Soundproof



DOORS

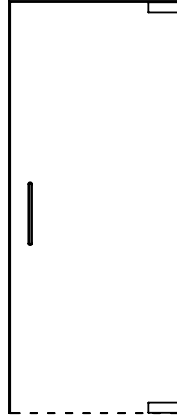
It could not be simpler – and yet it is always possible to bring your own flair to the design by adding special handles and decoration.

Fully glazed sliding doors



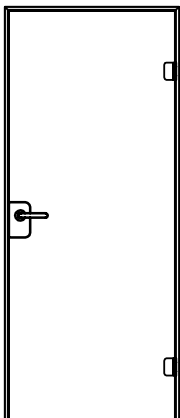
- Simple solution
- Minimalistic design
- Made to measure
- Optional noise barrier threshold

Fully glazed door, pintle-hinged ID31



- Simple solution
- Minimalistic design
- Made to measure
- Optional noise barrier threshold

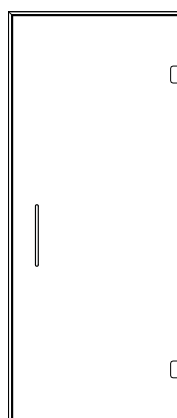
Fully glazed door with lock system



- Simple solution
- Minimalistic design
- Made to measure
- Optional noise barrier threshold
- Soundproof



Fully glazed door with pull handle



- Simple solution
- Minimalistic design
- Made to measure

ACCESSORIES

Hinges, handles and much more

Some examples of the accessories SKANDI-BO can supply are shown below. In principle, we can deliver any type of handle or door pump you require and integrate them into our systems.

Door closer, concealed



Integrated into the casing.
Fire-rated with SKANDI-BO ID85 Fire-rated.

Door closer, visible



Broad selection of colours.
The size of the door closer is adjusted to suit the dimensions of the door.

Automatic door opener with sensor



Integrated into the door's profile.
A variety of door openers can be adapted for our systems.

Cable loop



Cable loops are used when, for example, electric lock systems are required.

Stainless steel hinges



Same type of hinge regardless of door type – glass-framed or wooden – with ball bearing.

Door handles



The handle in the photo is our standard handle. We can provide most other models on request. We also have a broad selection of pull handles.

Floor door closer



A variety of floor door closers are available for pintle-hinged doors.

Electric control for natural ventilation



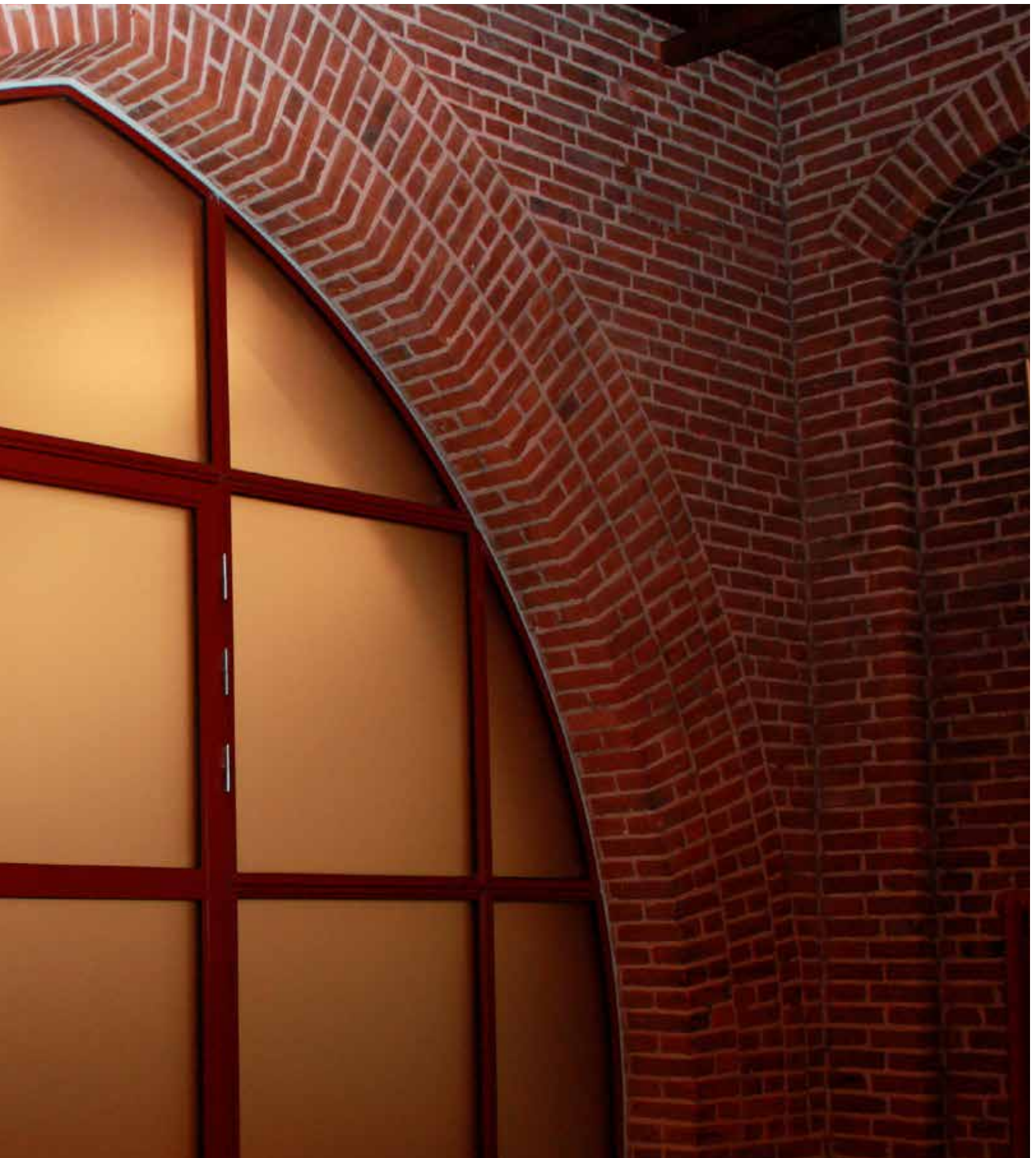
Custom solutions are designed together with the customer.

Access control



Access control can be installed on the narrowest of profiles.





CUSTOM DESIGNS

Our products can be combined in countless ways. Although we believe we have seen almost everything, we are constantly challenged by creative architects and clients. Our aim is to provide the perfect solution, and if we cannot do that with the systems we already have, we will rely on our skills in project specific innovation to achieve the desired outcome.

THE IMPOSSIBLE MADE POSSIBLE

We love custom designs

We have the expertise and the creative insight, and we have never said no to a challenge. Rather than providing standard solutions, we tailor a solution precisely to the specific requirements of your project, and we are willing to help at all stages of the design process. We look forward to special projects because they usually lead to exciting and unique designs.

Unconventional shapes

Listed buildings and buildings worthy of preservation need fireproof solutions even though the architecture can pose a challenge. This was the case with the head jamb adapted for the Gothic arch in Anna Church in the Nørrebro district of Copenhagen.



Anna Church, Nørrebro, Copenhagen

Large yet discrete smoke protection doors

If you want to avoid doors in a long corridor but need to be able to eliminate smoke in the event of a fire, giant smoke protection doors in discrete locations along the wall – as installed at the Technical University of Denmark's DTU 220 Biosustain – could be the solution.



DTU 220 Biosustain, Lyngby

Curved fireproof glass wall

We have installed a fireproof glass wall at the Lørenskog cultural centre in Norway. The wall is the first of its kind in Scandinavia and consists of segmented fireproof glass, which is laminated and 31 mm thick.



Lørenskog cultural centre, Norway

Inspirational and unique solutions

Corner solutions

At the Department of General Psychiatry in Esbjerg, transparency is a keyword – and even the corners needed to be as simple as possible. They therefore chose a minimalistic design where the corner profiles form an open corner. The result is slimmer than the customary solution with square tubes.



Department of General Psychiatry, Esbjerg

Creative innovation

What do you do if you want a fully glazed wall but need to be able to talk to people on the other side? The obvious solution for an ordinary wall would be to install a window. And that is what we did here.



Copenhagen Airport, Kastrup

Aesthetics and functionality

Colleagues passing the time of day and holding meetings at their desks pose a challenge in any open-plan office. In DGI-byen, a kitchenette with fully glazed walls can be used for impromptu meetings or a chat with colleagues without disturbing the entire office.



DGI-byen, Copenhagen





SKANDI·BO SUPPORTS YOU AT EVERY STEP

Glass partition walls and doors by SKANDI·BO are Danish craftsmanship at its best. Designed, tested and further developed over a generation. Daylight is highly valued in renovation projects and new builds – and we do our best every day to bring it into play in new solutions. We support you with advice and input from project start to handover.

ARCHITECT SERVICE

Involve us from the beginning

It is impossible to know everything about glass walls, doors and lock systems, but we are familiar with most aspects – and we would be delighted to support you with our expertise. We can help you with creative input before the project reaches the drawing board and during the design phase. And once the project is underway, we handle all stages up to delivery at building site.

Professional advice by professionals

Whether you are a developer or an architect, you are very welcome to ask our advice about glass walls that combine pure aesthetics with an uncompromising attitude to functionality. We are professional advisers, and we understand how to transform ideas into strong solutions. As professionals, we understand the properties of the materials and we know how to merge construction requirements with innovative design. We can provide you with advice and technical drawings even before your idea has fully taken shape.



We manage your project throughout the entire process

We provide you with advice and guidance along the way when necessary – from interior design and creative input to project development and technical advice. The plans and production drawings we prepare give us a good overview and understanding of the details of the project. We are familiar with the entire project and are often used as a sounding board throughout all project phases.



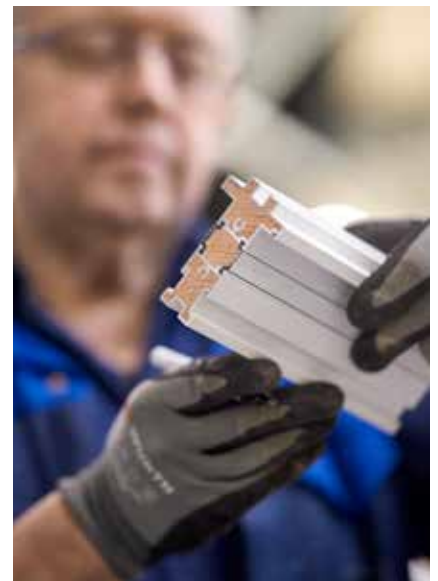
CRAFTSMANSHIP AND TRADITIONS

Outstanding finish and great flexibility

All of our solutions are custom-built. We are therefore extremely flexible and always open to new ideas. Our products are subjected to a wide range of tests and are constantly being further developed. Most of our staff have been with us for many, many years. They have extensive know-how and are highly creative, and they apply this expertise when tackling new challenges.

Craftsmanship from start to finish

Our components do not simply roll off a machine. Although our systems are based on standard parts, none escape our employees' expert hands. We make sure that all components receive the perfect finish. SKANDI-BO's factory and headquarters are situated in West Zealand, Denmark, where we have been manufacturing windows and doors for a generation – initially in wood and, more recently, exclusively in aluminium. We have chosen to specialise in indoor glass partition walls and doors to match and we are constantly refining design and production methods.

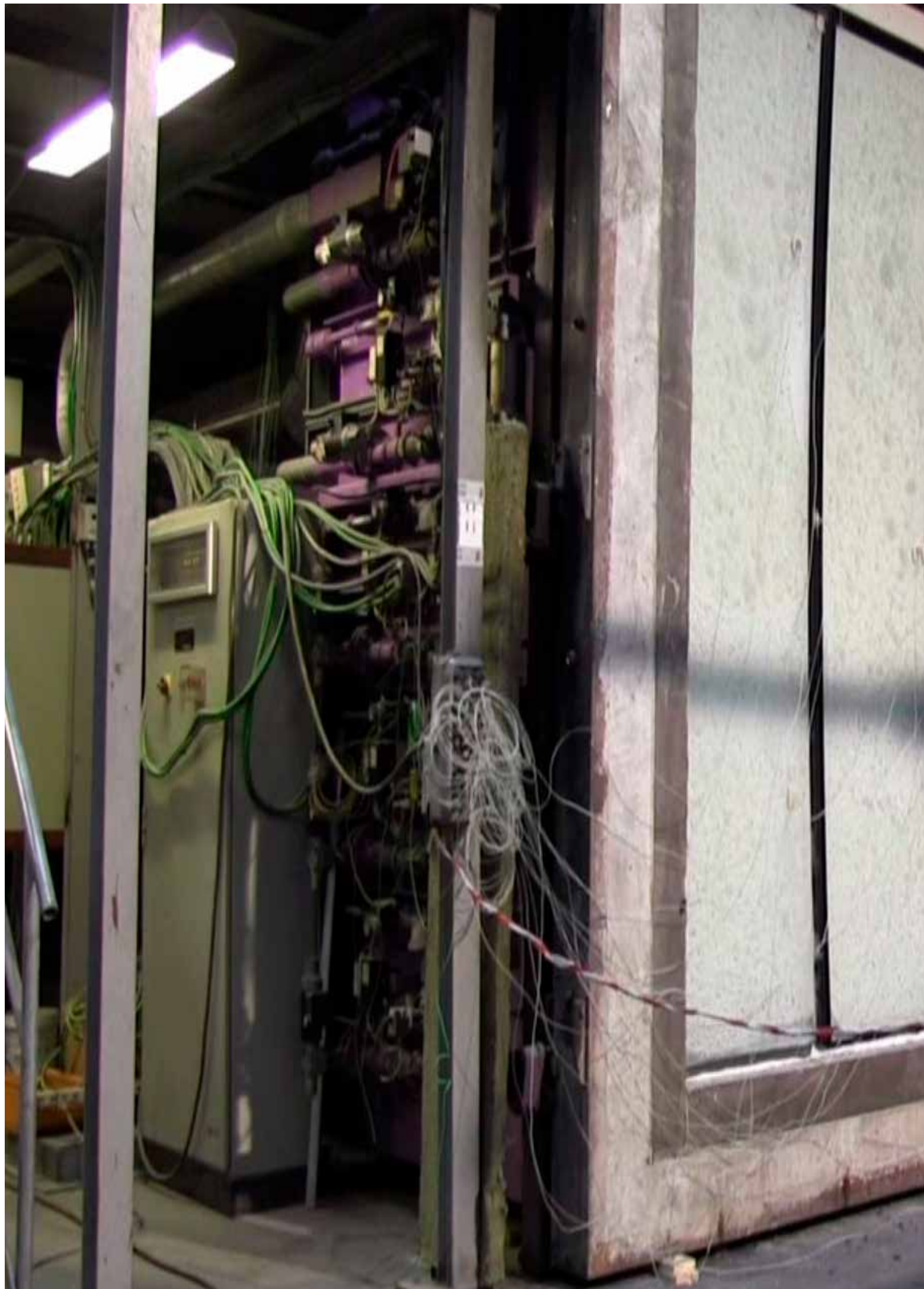


Pre-fabrication ensures an outstanding finish and fast assembly

Both frames and casings are pre-fabricated, and we assemble them in our production facilities. This means that our quality assurance applies to the finished product, which is then carefully packed so that it is ready for installation. Since the systems are delivered fully assembled, they can be installed by any craftsman who is able to install, for example, windows.

Due to this procedure, installation time on the building site is short and the risk of errors is kept to a minimum.







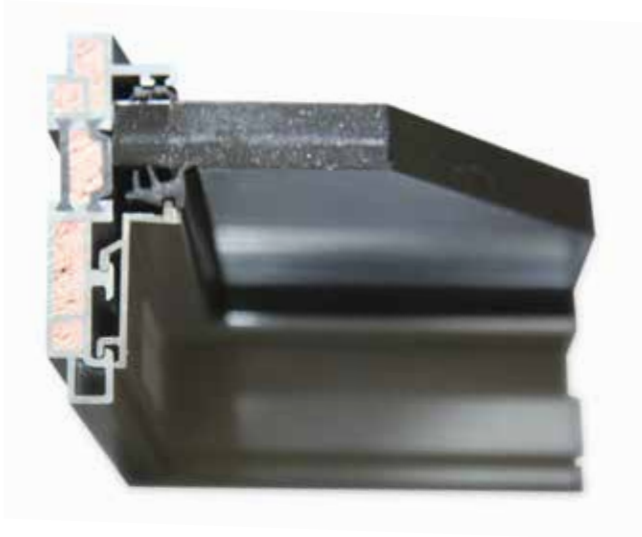
TESTED FIREPROOF

Designing a fireproof glass wall is a complicated business – and even more difficult if there is a door. Glass and profiles must fit perfectly and the wall must be able to pass all relevant fire tests.

FIRE SAFETY IN THREE DESIGNS

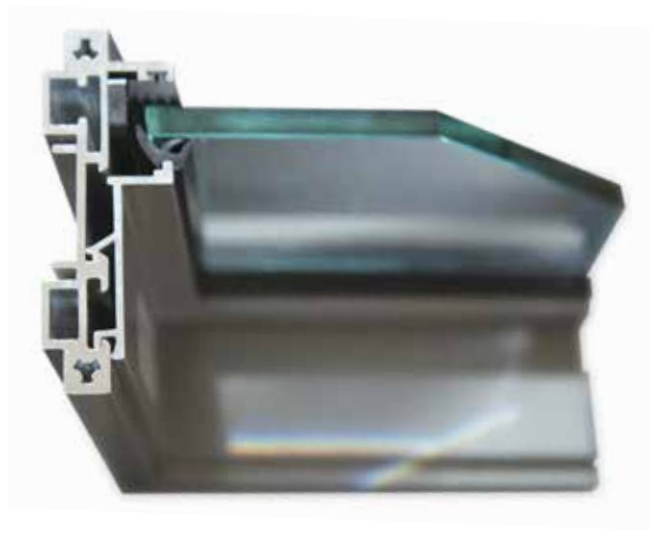
Fully glazed systems, frames and laboratories

SKANDI-BO has several exciting design options if fire safety is essential to the building. Our fully glazed system, frame and laboratory systems all enable combination of the benefits of great inflow of light, stylish design and a strong structure that complies with all fire ratings, from E30 to EI60.



ID85 Fire-rated

Materials: Laminated fireproof glass and aluminium frame with fire retardant material.



ID85 Non-rated

Materials: Standard safety glass and standard aluminium frame.
Note that the profile has exactly the same dimensions in both the fire-rated and the non-rated versions.

The fire-rated and non-rated versions look the same

From the outside, SKANDI-BO's fire-rated and non-rated glass walls look exactly the same. Due to the design quality, we can construct a double-glazed solution that combines a fireproof wall with a standard wall, without compromising on aesthetics. The profiles have precisely the same dimensions but the fireproof profiles are filled with a special fire retardant gel. Fire retardant glass contains an invisible gel which foams up to form a strong core when the glass is exposed to fire. It holds back smoke gases and flames to keep the temperature on the other side of the glass down and to prevent the fire from spreading. Our fire-rated glass walls and doors were developed in close collaboration with Scandinavian fire testing bodies, which regularly perform tests on our products.

If you are looking for the highest possible level of fire safety, and do not wish to compromise on aesthetics, we recommend ID85 Fire-rated with frame and glass-framed door. This solution has been tested and certified as an entire unit.

This is no reason to curtail freedom of architectural expression simply because there is a workshop with a fire hazard on the other side of the wall. We can even install the fireproof sliding doors in a glass wall.



TESTED FIREPROOF

Highly fire-resistant systems



Glass partition wall after a fire test at DBI.

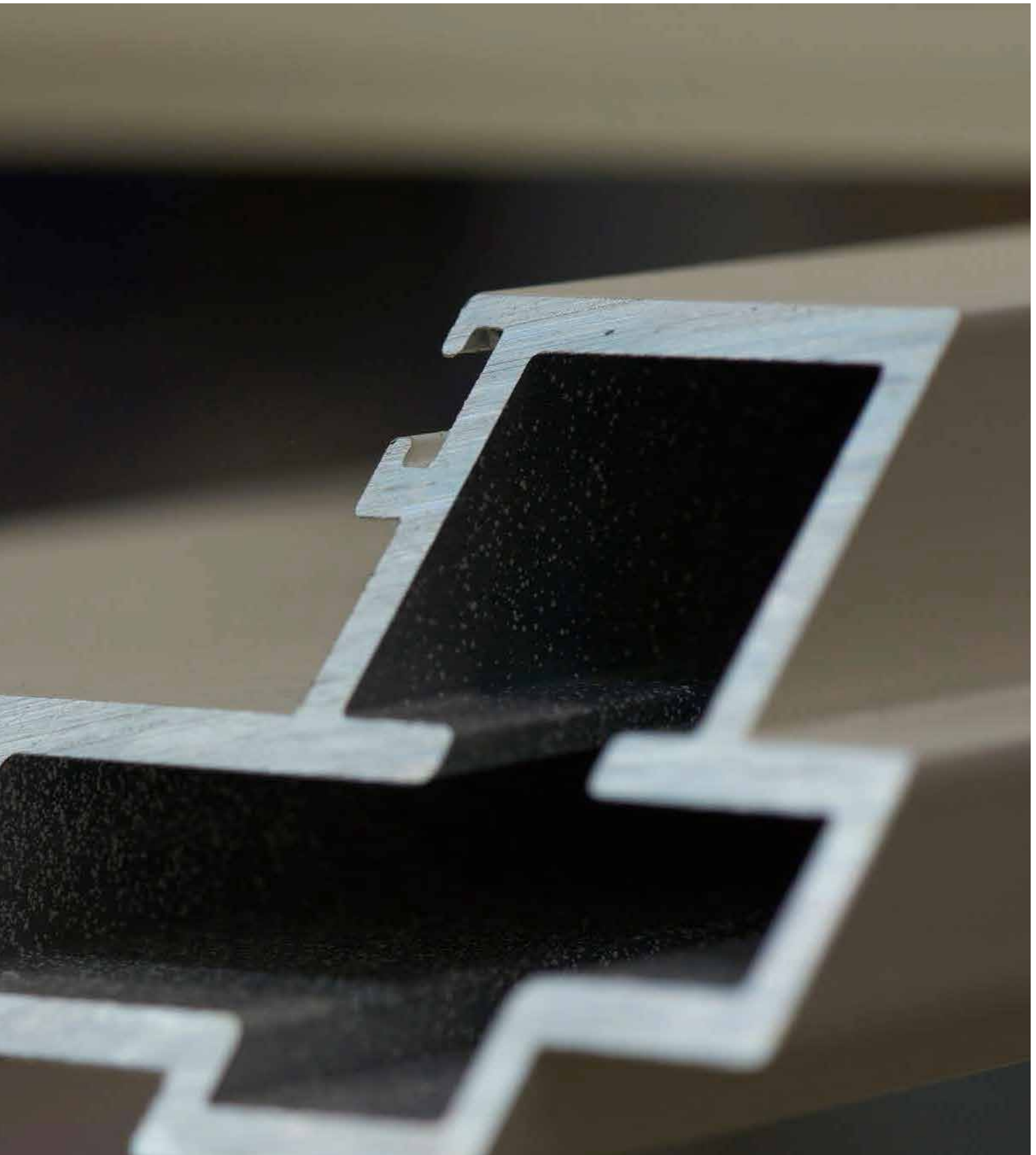


- The heat-treated glass on the side facing the fire explodes and falls into the oven.
- The fire protection gel expands and forms an opaque and insulating layer.
- The temperature in the oven after 15 minutes is approximately 740°C.
The surface temperature of the glass and profiles is approximately 45°C.
- The temperature in the oven after 60 minutes is approximately 945°C.
The surface temperature of the glass and profiles is approximately 75°C.
- The aluminium profiles are still extremely strong after the test has been completed.



Visit www.skandi-bo.dk to watch a video of the test





TECHNICAL SPECIFICATIONS

The next pages include a quick summary of our product range in table format. The three systems are shown with key figures. We then list the properties common to all of the systems and, finally, show detailed technical drawings with dimensions. You can also download drawings for your projects from our website.

SUMMARY

FULLY GLAZED SYSTEM

TYPE	WALL THICKNESS	LAYERS OF GLASS (NO.)	GLASS THICKNESS	WEIGHT (kg/m²)	AIRBORNE SOUND INSULATION (RW)	FIRE RATING
ID50 Fire-rated	46-56 mm	1-2	23-33 mm	65-90 kg	34-49 dB	EW30 - EI60 A2-s1, d0
ID50 Non-rated	46-56 mm	1-2	23-33 mm	60-85 kg	40-49 dB	Non-rated
ID31 Non-rated	31 mm	1	8-17 mm	20-50 kg	32-41 dB	Non-rated

FRAME SYSTEM

TYPE	WALL THICKNESS	LAYERS OF GLASS (NO.)	GLASS THICKNESS	WEIGHT (kg/m²)	AIRBORNE SOUND INSULATION (RW)	FIRE RATING
ID85 Fire-rated	85 mm	1-2	8-44 mm	25-115 kg	34-49 dB	E30 - EI60 A2-s1, d0
ID85 Non-rated	85 mm	1-2	8-44 mm	20-110 kg	32-49 dB	Non-rated

LABORATORY SYSTEM

TYPE	WALL THICKNESS	LAYERS OF GLASS (NO.)	GLASS THICKNESS	WEIGHT (kg/m²)	AIRBORNE SOUND INSULATION (RW)	FIRE RATING
ID120 Lab Fire-rated	120 mm	3	4+16/25+6 mm	70-95 kg	38-49 dB	E30 - EI60 A2-s1, d0
ID120 Lab Non-rated	120 mm	2	4+6 mm	30-40 kg	36-49 dB	Non-rated

- Dimensions and formats according to project. For further details, please contact our sales department
- Wall thickness depends on soundproofing and fireproofing requirements
- Double glazing is supplied as a sealed unit
- Glass thickness depends on soundproofing and fireproofing requirements
- The weight includes the profile system
- The acoustic values are the airborne acoustic values for the glass

PROPERTIES

Identical for all systems



- Our aluminium profiles start at a mere 30 mm in width – the dimensions are specified on the drawings for the three systems
- The dimensions are the same for both fire-rated and non-rated profiles, making them identical in appearance
- Profiles are available with natural anodisation and in all RAL colours – over 1600 colours in total
- Our solid wooden doors are available in all RAL colours, either laminate or in a variety of wood veneers
- There are no standard dimensions – we manufacture in Denmark and are very versatile and open to ideas
- Joints between panes are usually transparent but our certified fireproof joints are black
- Foil decoration in your own design can be applied to the glass either before or after installation
- Panes can be delivered with durable silk screen print
- The glass in all three systems can be delivered with a variety of acoustic, fireproofing and safety requirements
- Our soundproof glass meets requirements for 25-49dB (acoustic values based on a fully glazed pane)
- Fire safety is specified in fire classes from E30 – EI60 A2-s1,d0 (previously F30 – BS60)
- Our glass is physical security glass, and we can supply up to safety class P8B
- All three systems are available with single glazing or double glazing
- White Venetian blinds can be installed between the panes in walls with double glazing
- All doors, including fire doors, have level-free access, i.e. there is no threshold bar.

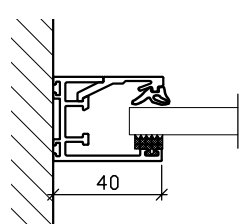
If you would like more information about our products and systems, you are always welcome to call for advice and guidance (+45 59 59 50 54).

Profiles

Technical drawing of a door cross-section. The drawing shows a door with a central panel and a handle. The dimensions are indicated as 45 and 46,8.

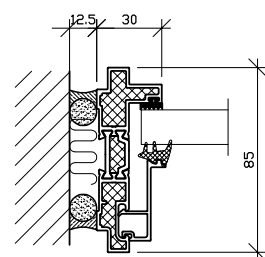
Technical drawing of a window frame cross-section. The drawing shows a multi-paned window set within a frame. A vertical dimension line on the right indicates a height of 45. A horizontal dimension line at the bottom indicates a width of 46,8.

ID31 Non-rated · fully glazed system



A technical drawing of a door handle assembly. It shows a horizontal handle on the left connected to a vertical mounting plate on the right. The mounting plate is attached to a wall, indicated by diagonal hatching. A dimension line at the bottom indicates a horizontal distance of 40 units from the wall to the center of the handle.

ID85 Fire-rated · frame system

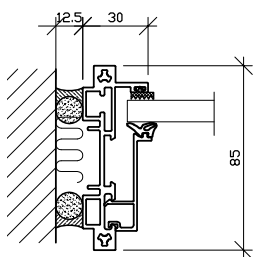


Technical drawing of a door threshold cross-section. The profile has a total height of 30 and a base height of 10. It features a central channel and a locking mechanism on the right side.

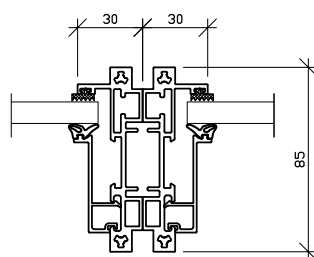
Technical drawing of a window frame cross-section. The drawing shows a central glass unit (BU) with a width of 43 and a height of 40. The frame is composed of several parts, including a top rail, a bottom rail, and side rails. The total width of the frame is 65, and the total height is 30. The drawing includes hatching to indicate different materials and components.

42

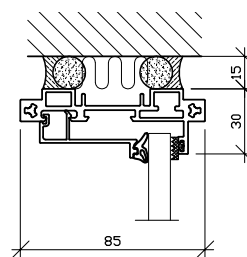
ID85 Non-rated · frame system



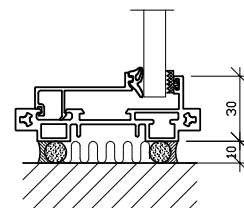
A. Horizontal sectional view:
Attachment at the wall



B. Horizontal sectional view:
Attachment at the wall

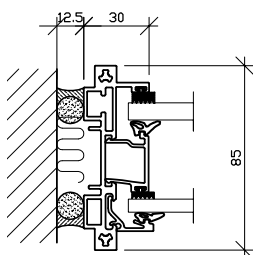


C. Vertical sectional view:
Attachment at the ceiling

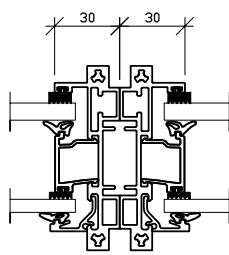


D. Vertical sectional view:
Attachment at the floor

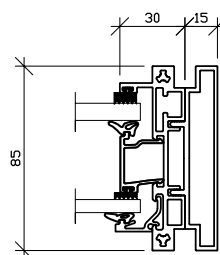
ID85 Non-rated · double glazing frame system



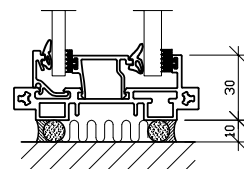
A. Horizontal sectional view:
Attachment at the wall



B. Horizontal sectional view:
Element joint

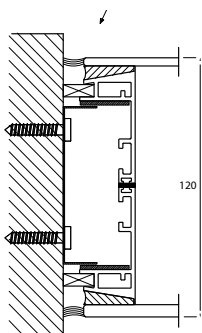


C. Vertical sectional view:
End seal

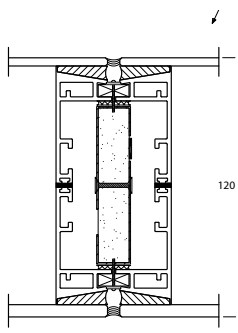


D. Vertical sectional view:
Attachment at the floor

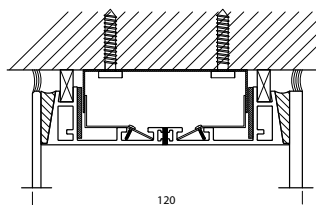
ID120 Lab · frame system



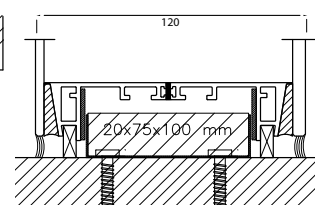
A. Horizontal sectional view:
Joint, wall profile/
glass-framed door



B. Horizontal sectional view:
Profile joint



C. Vertical sectional view:
Attachment at the ceiling



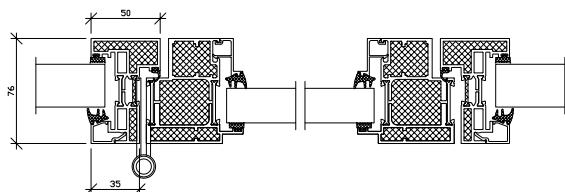
D. Vertical sectional view:
Attachment at the floor

TECHNICAL SPECIFICATIONS

Sectional view, doors

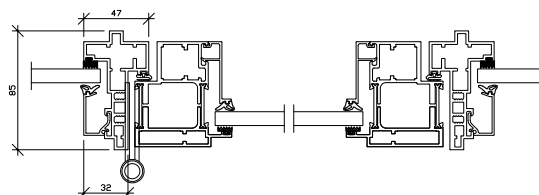
Fully glazed system

ID50 Fire-rated



Horizontal sectional view:
Joint, wall profile with glass-framed door

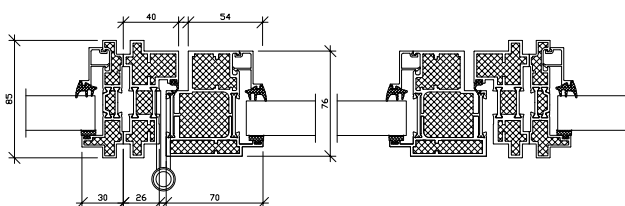
ID31 Non-rated



Horizontal sectional view:
Joint, wall profile with fully glazed
door/glass-framed door

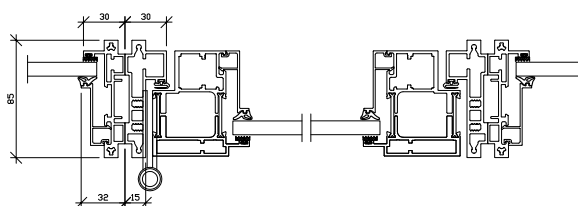
Frame system

ID85 Fire-rated



Horizontal sectional view:
Joint, wall profile with glass-framed door

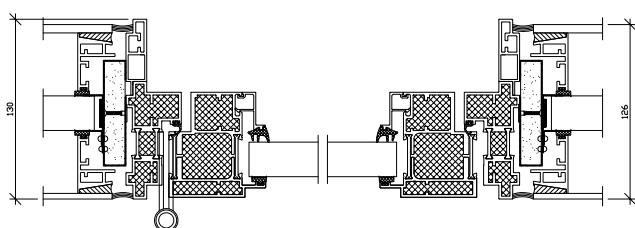
ID85 Non-rated



Horizontal sectional view:
Joint, wall profile with
glass-framed door

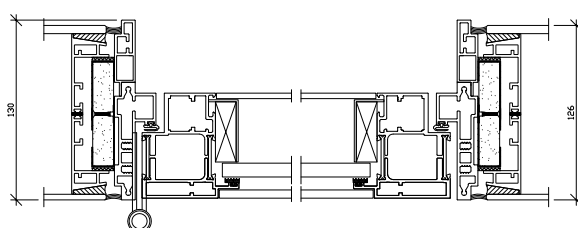
Laboratory frame system

ID120 Lab Fire-rated



Horizontal sectional view:
Joint, wall profile with glass-framed door

ID120 Lab Non-rated



Horizontal sectional view:
Joint, wall profile with glass-framed door



© SKANDI-BO 2018 - Text and layout: Drammefabrikken and 360 Degree

ARCHITECT SERVICE

Give us a ring for professional advice on technical and aesthetic solutions to suit your design. Whether you are looking to create more light or you need to consider acoustics or fire safety, SKANDI-BO's fully glazed partition walls will provide you with a stylish yet functional solution.

Contact

www.skandi-bo.dk

info@skandi-bo.dk

Tel. +45 59 59 50 54

SKANDI·BO® 